

Ibirá Access

Ibirá is our storage unit. We can access it by: CIFS, NFS, FTP and HTTP.

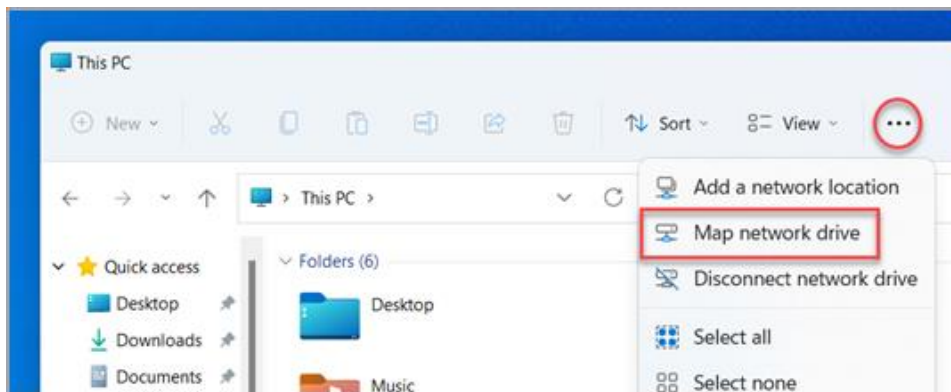
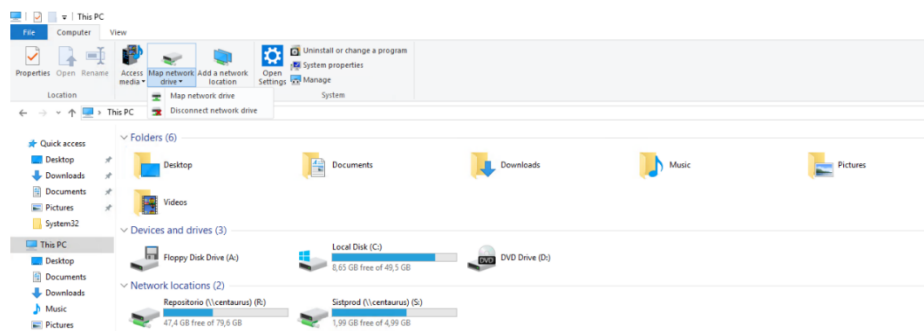
Remember to remote dconnect to CNPEM Network

<https://cnpemcamp.sharepoint.com/:w:/s/GrupoIPE128/Ee6cIFtvJL5AgsdxXAIG0wEBV3DQctuSEGq-xf-ECUDyiw?e=uByLX9>

CIFS

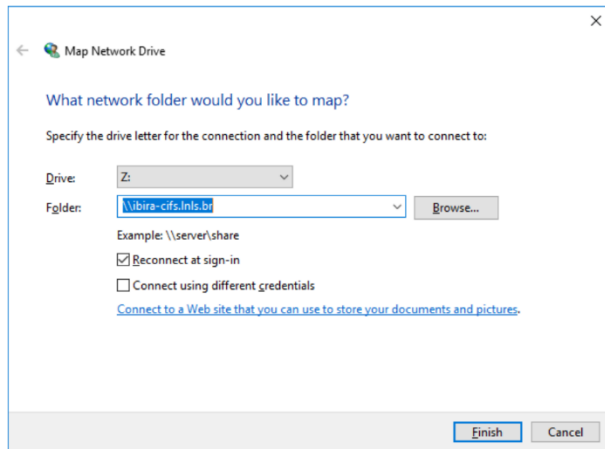
Windows

Open de explorer, click with the right button at This PC or open This PC and click at “Map a Network Driver”



At Folder: [\\ibira-cifs.inls.br\ibira\](https://cnpemcamp.sharepoint.com/:w:/s/GrupoIPE128/Ee6cIFtvJL5AgsdxXAIG0wEBV3DQctuSEGq-xf-ECUDyiw?e=uByLX9)

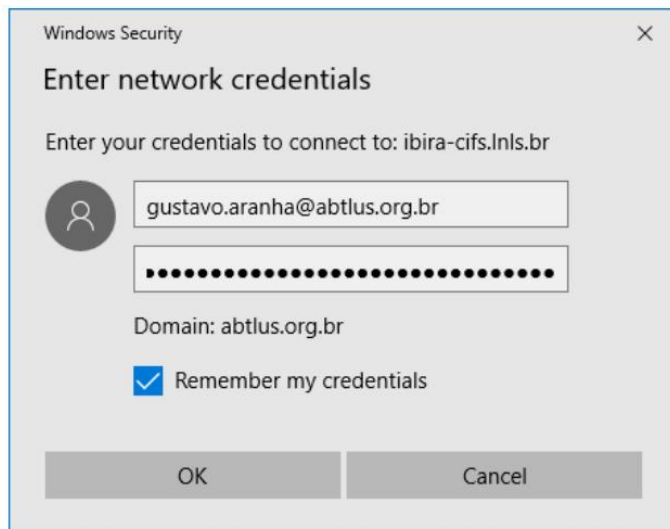
Check Connect using different credentials



Fill in your username from CNPEM:

up.<first_letter><last_name><maybe_number>@abtlus.org.br

And your password: Password from SAU



Ubuntu

Para acesso pontual, utilize o comando abaixo:

```
sudo mount.cifs -o username=<usuario_cnpem>,uid=`id -u $USER`,gid=`id -g $USER`,domain=ABTLUS,vers=3.0,cifsacl //ibira-cifs.inls.br/ibira /ibira
```

Para acesso recorrente, acrescentar a seguinte linha de configuração no arquivo /etc/fstab:

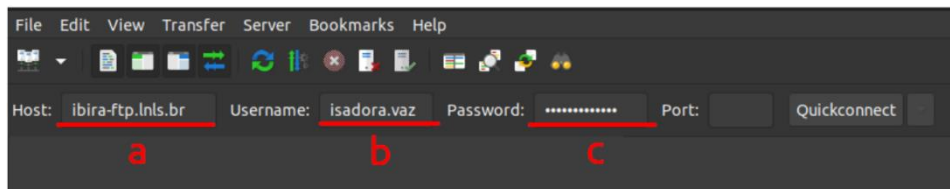
```
//ibira-cifs.Inls.br/ibira /ibira cifs
uid=1000,gid=1000,username=<usuario_cnpem>,domain=ABTLUS,vers=3.0,cifs
cl 0 0
```

FTP (Filezilla)

FileZilla is a client used for managing and transferring files, which enables you to access the Ibirá storage unit via FTP (File Transfer Protocol) quickly and securely.

Download: https://filezilla-project.org/download.php?show_all=1

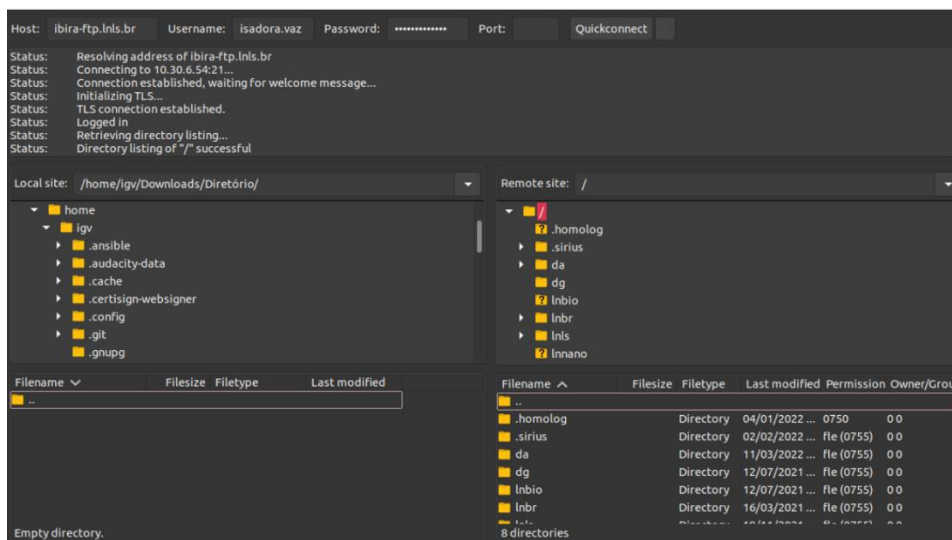
Access



Host: ibira-ftp.Inls.br

Username: CNPEM username up.<first_letter><last_name><maybe_number>

Password: SAU password

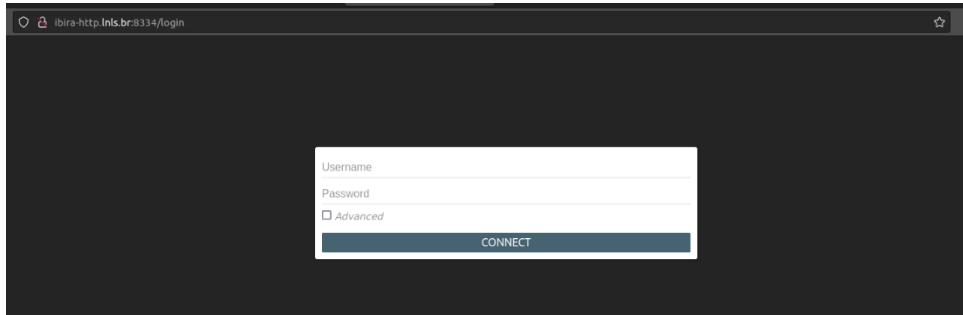


At Remote site go to o /Inls/beamlines/ipe/proposal/<your proposal>/

At Local site, you can choose a personal folder

HTTP + FTP: Filestash

Using an internet browser, access the following address: <http://ibira-http.inls.br:8334>. A login form will be displayed. The login information (username and password) is the same used to access the CNPEM network

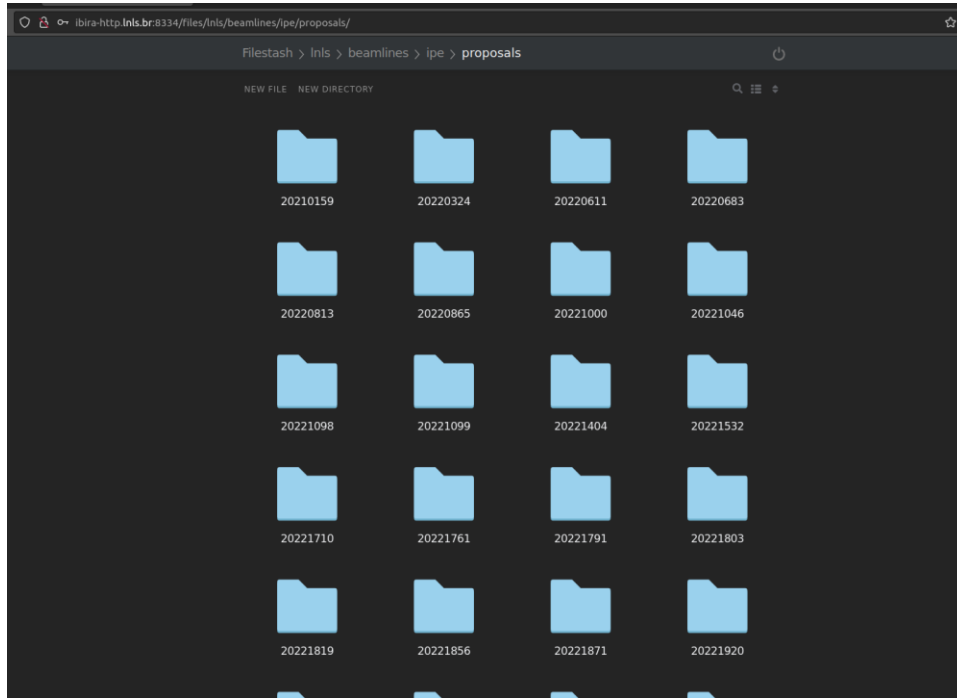


The image shows a screenshot of a web browser window. The address bar at the top displays the URL `ibira-http.inls.br:8334/login`. The main content area of the browser is dark, and a white login form is centered on the screen. The form contains the following elements:

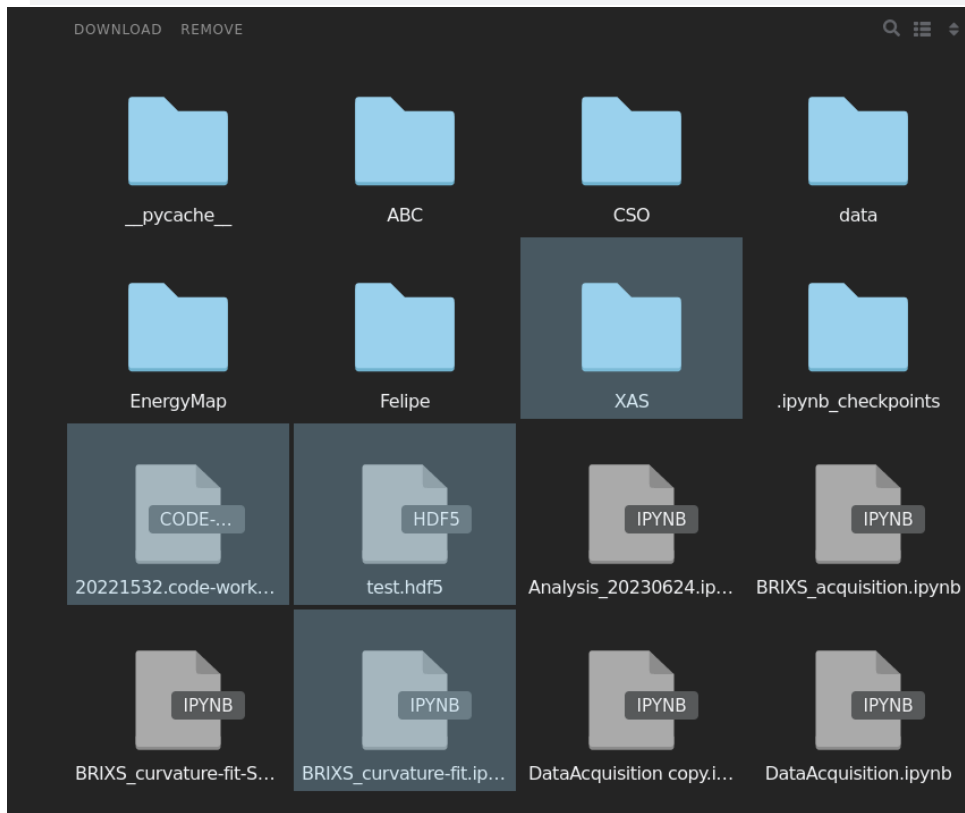
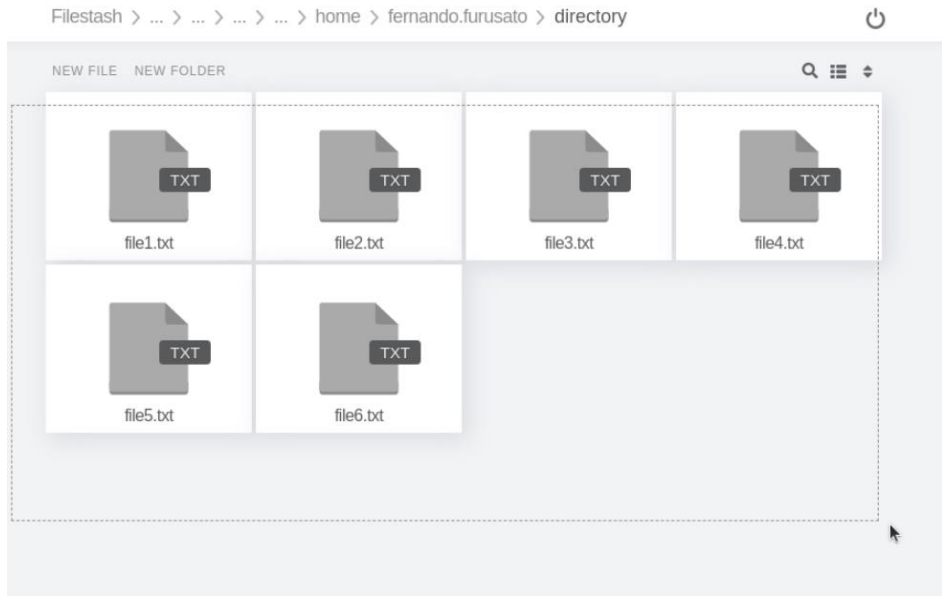
- A text input field labeled "Username".
- A text input field labeled "Password".
- A checkbox labeled "Advanced".
- A dark button labeled "CONNECT".

After authenticating, the user will see the root of Ibirá.

Go to Inls, beamlines, ipe, proposal and your proposal. (<http://ibira-http.inls.br:8334/files/inls/beamlines/ipe/proposals/>)



To download, just select the files/folders



And click in Download at the top-left

NFS

Using Linux

Install NFS:

```
sudo apt install nfs-common
```

Create a destiny folder with:

```
mkdir /my/personal/folder
```

```
sudo mount -o vers=4.2 ibira-nfs.Inls.br:/ibira /my/personal/folder
```

It is also possible to set up a configuration for the mount to be performed at system startup. With a root user, open the `/etc/fstab` file using a text editor and insert the following line:

```
ibira-nfs.Inls.br:/ibira /my/personal/folder nfs vers=4.2,defaults 0 0
```